

# Test Report



**Report No.** A2200017795101003

**Applicant** SHENZHEN RUNLITE TECHNOLOGY CO.,LTD

**Address** BUILDING A15, TANTOU THE 4TH INDUSTRIAL ESTATE, SONGGANG TOWN,  
BAOAN DISTRICT, SHENZHEN, CHINA

**The following sample(s) and sample information was/were submitted and identified by/on the behalf of the client**

Sample Name SMD PCT LED  
Part No. 2835  
Client Reference Information 2016、3528、3014、4014、3030、5050、5630、5730、4010、2110  
Sample Received Date Jan. 17, 2020  
Testing Period Jan. 17, 2020 to Jan. 21, 2020

**Test Requested** As specified by client, to test Lead(Pb), Cadmium(Cd), Mercury(Hg), Hexavalent Chromium(Cr(VI)), Polybrominated Biphenyls(PBBs), Polybrominated Diphenyl Ethers (PBDEs), Phthalates (DBP, BBP, DEHP, DIBP) in the submitted sample(s).

**Test Method** Please refer to the following page(s).

**Test Result(s)** Please refer to the following page(s).



Tested by

*Suang Lin*

Approved by

*Hill Zheng*

Hill Zheng  
Technical Manager

Reviewed by

*Ophelie Wen*

Date

Jan. 21, 2020

No. R262621381

Centre Testing International Group Co.,Ltd.

CTI Building, Xing Dong Community, Xin'an Sub-district, Bao'an District, Shenzhen City, Guangdong Province, P.R. China

# Test Report

Report No. A2200017795101003

Page 2 of 7

## Test Method

Test Item(s)	Test Method	Measured Equipment(s)
Lead(Pb)	IEC 62321-5:2013	ICP-OES
Cadmium(Cd)	IEC 62321-5:2013	ICP-OES
Mercury(Hg)	IEC 62321-4:2013+AMD1:2017 CSV	ICP-OES
Hexavalent Chromium(Cr(VI))	IEC 62321-7-2:2017 and/or determination of Total Chromium by IEC 62321-5:2013	UV-Vis/ICP-OES
Polybrominated Biphenyls(PBBs)	IEC 62321-6:2015	GC-MS
Polybrominated Diphenyl Ethers (PBDEs)	IEC 62321-6:2015	GC-MS
Phthalates (DBP, BBP, DEHP, DIBP)	IEC 62321-8:2017	GC-MS

AT/

测试  
astin

# Test Report

Report No. A2200017795101003

Page 3 of 7

**Test Result(s)**

Tested Item(s)	Result	MDL
Lead(Pb)	N.D.	2 mg/kg
Cadmium(Cd)	N.D.	2 mg/kg
Mercury(Hg)	N.D.	2 mg/kg
Hexavalent Chromium(Cr(VI))	N.D.	8 mg/kg
Tested Item(s)	Result	MDL
<b>Polybrominated Biphenyls(PBBs)</b>		
Monobromobiphenyl	N.D.	5 mg/kg
Dibromobiphenyl	N.D.	5 mg/kg
Tribromobiphenyl	N.D.	5 mg/kg
Tetrabromobiphenyl	N.D.	5 mg/kg
Pentabromobiphenyl	N.D.	5 mg/kg
Hexabromobiphenyl	N.D.	5 mg/kg
Heptabromobiphenyl	N.D.	5 mg/kg
Octabromobiphenyl	N.D.	5 mg/kg
Nonabromobiphenyl	N.D.	5 mg/kg
Decabromobiphenyl	N.D.	5 mg/kg
Tested Item(s)	Result	MDL
<b>Polybrominated Diphenyl Ethers (PBDEs)</b>		
Monobromodiphenyl ether	N.D.	5 mg/kg
Dibromodiphenyl ether	N.D.	5 mg/kg
Tribromodiphenyl ether	N.D.	5 mg/kg
Tetrabromodiphenyl ether	N.D.	5 mg/kg
Pentabromodiphenyl ether	N.D.	5 mg/kg
Hexabromodiphenyl ether	N.D.	5 mg/kg
Heptabromodiphenyl ether	N.D.	5 mg/kg
Octabromodiphenyl ether	N.D.	5 mg/kg
Nonabromodiphenyl ether	N.D.	5 mg/kg
Decabromodiphenyl ether	N.D.	5 mg/kg

# Test Report

Report No. A2200017795101003

Page 4 of 7

**Test Result(s)**

Tested Item(s)	Result	MDL
<b>Phthalates (DBP, BBP, DEHP, DIBP)</b>		
Dibutyl phthalate(DBP) CAS#:84-74-2	N.D.	50 mg/kg
Butyl benzyl phthalate(BBP) CAS#:85-68-7	N.D.	50 mg/kg
Di-(2-ethylhexyl) phthalate(DEHP) CAS#:117-81-7	N.D.	50 mg/kg
Diisobutyl phthalate(DIBP) CAS#:84-69-5	N.D.	50 mg/kg

**Sample/Part Description** SMD LED(Tested as a whole)

**Remark:**

- The sample(s) had been dissolved totally tested for Lead, Cadmium, Mercury.
- The sample(s) was tested as a whole, because it's impossible to disassemble or separate it by current equipment and technology. The result(s) shown on this report may be different from the content of any homogeneous material.
- MDL = Method Detection Limit
- N.D. = Not Detected (<MDL )
- mg/kg = ppm = parts per million

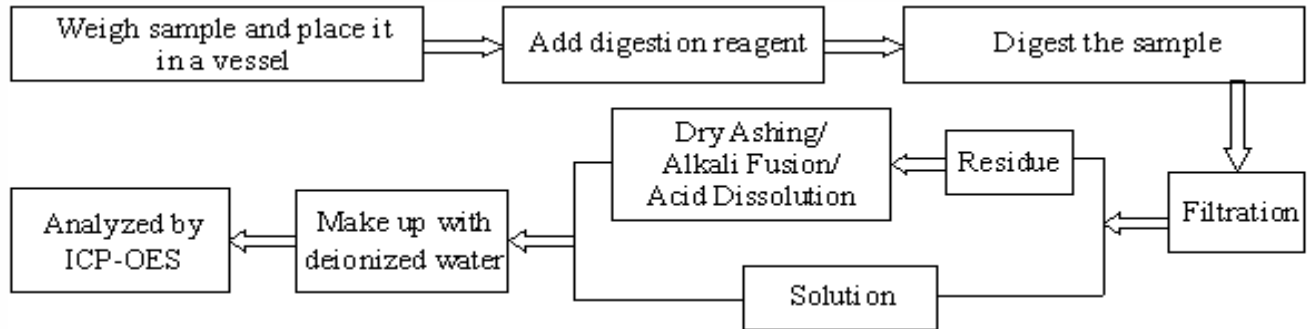
# Test Report

Report No. A2200017795101003

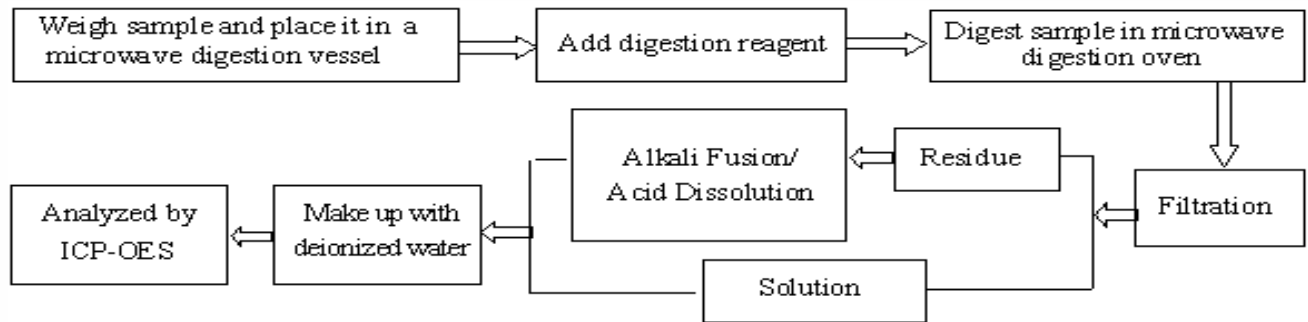
Page 5 of 7

## Test Process

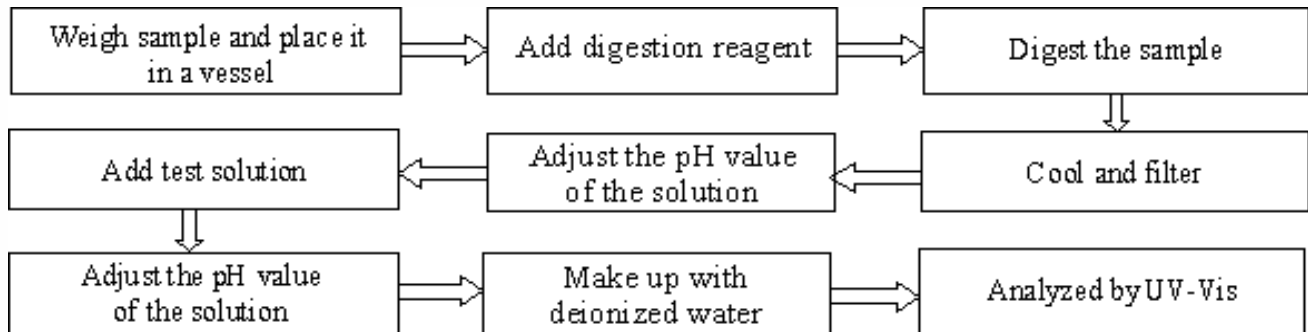
### 1. Lead(Pb), Cadmium(Cd), Chromium(Cr)



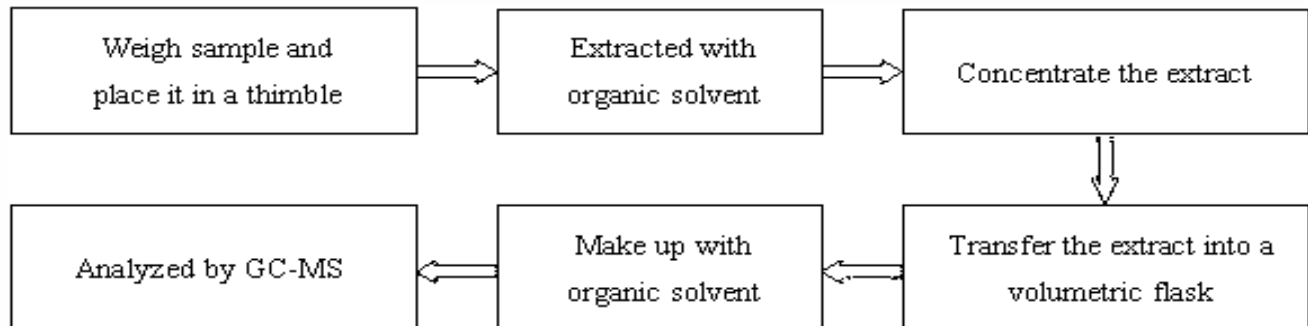
### 2. Mercury(Hg)



### 3. Hexavalent Chromium(Cr(VI))



### 4. Polybrominated Biphenyls(PBBs), Polybrominated Diphenyl Ethers (PBDEs)

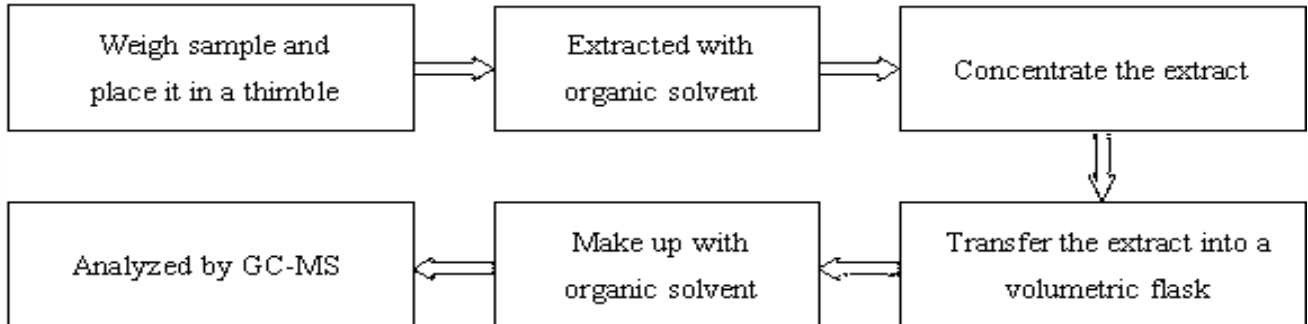


# Test Report

Report No. A2200017795101003

Page 6 of 7

## 5. Phthalates (DBP, BBP, DEHP, DIBP)



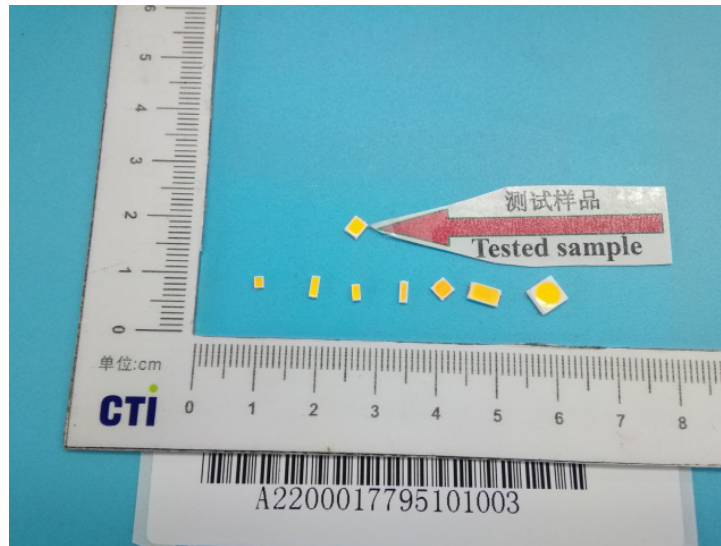
有限公司

# Test Report

Report No. A2200017795101003

Page 7 of 7

## Photo(s) of the sample(s)



\*\*\* End of report \*\*\*

### Statement:

1. This report is considered invalid without approved signature, special seal and the seal on the perforation;
2. The sample(s) and sample information was/were provided by the client who should be responsible for the authenticity which CTI hasn't verified;
3. The result(s) shown in this report refer(s) only to the sample(s) tested;
4. Without written approval of CTI, this report can't be reproduced except in full;
5. In case of any discrepancy between the English version and Chinese version of the testing reports (if generated), the Chinese version shall prevail.